



*Performance Dashboard
4 months from June up to and including September 2023*



Caring for people, our places and the planet

BARNET
LONDON BOROUGH



Data Collection



The data from this report is collected from the following sources:

Crime Data:

<https://data.london.gov.uk/dataset/mps-monthly-crime-dahboard-data>

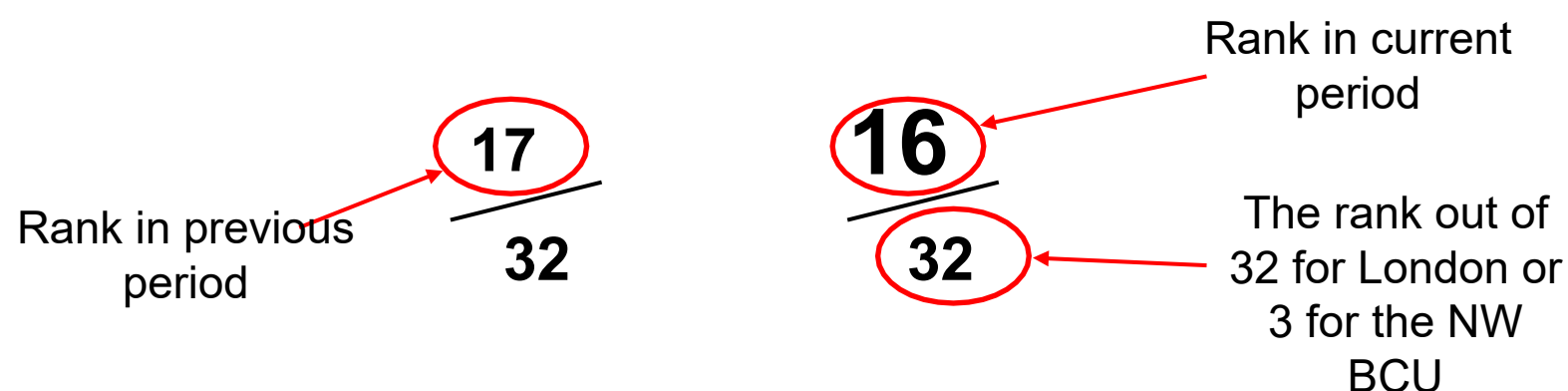
ASB, CCTV and Prevent Data: Barnet Community Safety Team

Slides 4-10 are formed from the above sources and will be presented by MPS NW BCU

Slides 11-18 are formed from LBB data (ECINS/CCTV) and will be presented by LBB

Notes Before We Start

- The lower the ranking the better Barnet is doing when compared with other boroughs across London on in the North West Borough Command Unit (NW BCU).



- Knife crime has previously been reported on as under 25s and non-DV only, this report will note all knife crime with injury which will give a higher number than previous.
- In the London comparison 1/32 is the best, 32/32 is the worst. Change is indicated by the Red Amber Green circle.
- In the NW BCS comparison 1/3 is the best, 3/3 is the worst. Change is indicated by the Red Amber Green arrow.

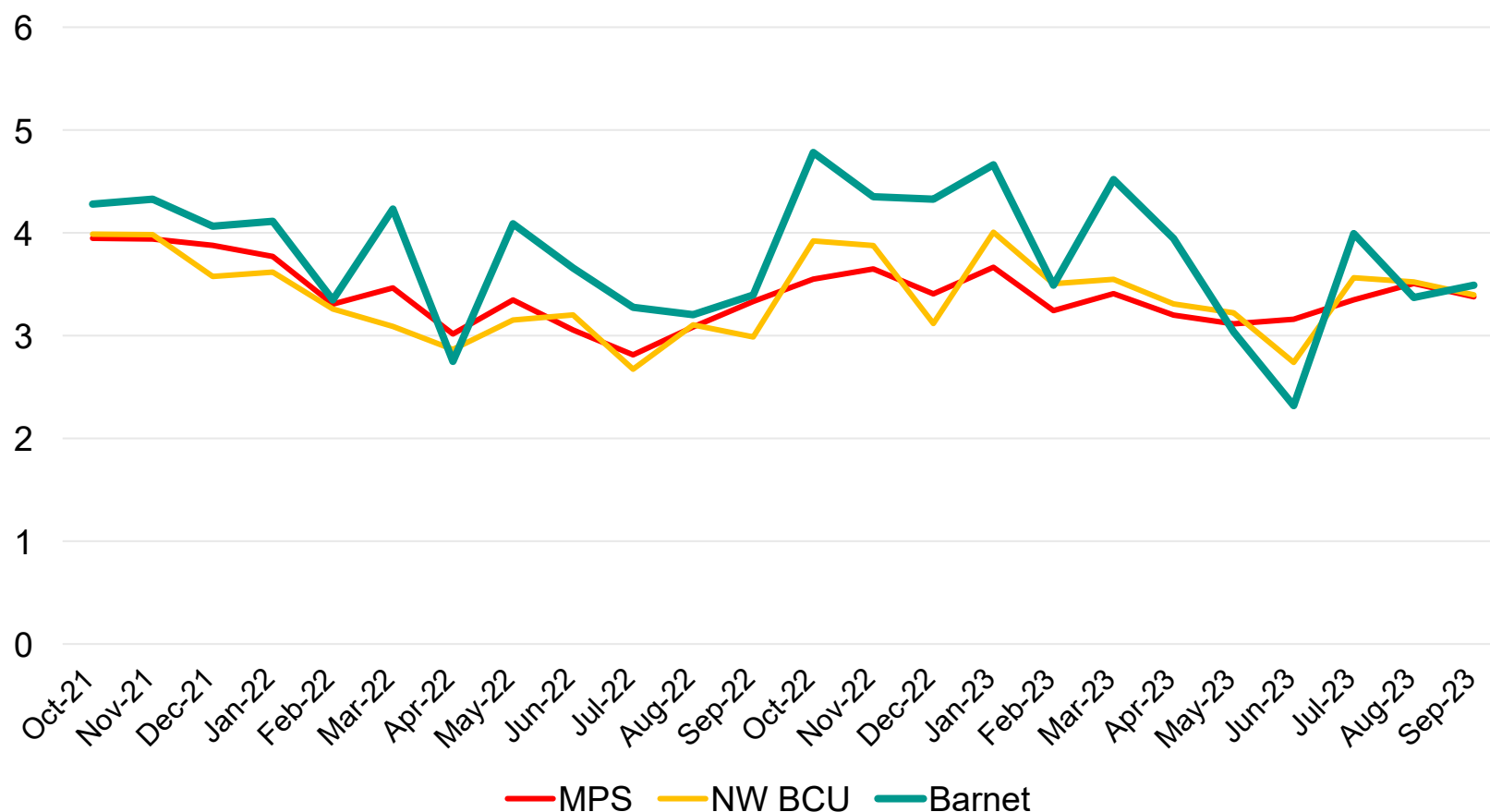
Domestic Burglary



In the 4 months of June 2023 to September 2023 there were 551 cases of Residential Burglary in Barnet

Trend

Residential Burglary per 10,000 Population

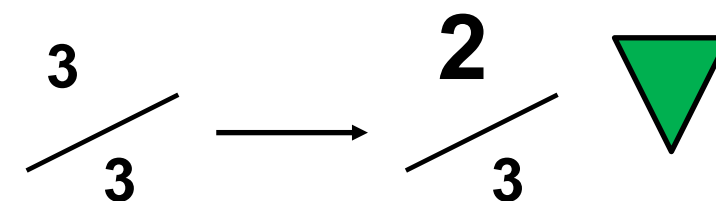


4 Month Performance

MPS Comparison (4 Month Period) change from same period last year.



NW BCU Comparison (4 Month Period) change from same period last year.



There were 551 cases of Residential Burglary in the 4 months of June 2023 to September 2023. In the same period 12 months prior there were 566. This is a decrease of 2.7%

There were 1936 cases of Residential Burglary in Barnet in the 12 months up to September 2023. In the 12 months prior there were 1871. This is an increase of 3.5%

Caring for people, our places and the planet

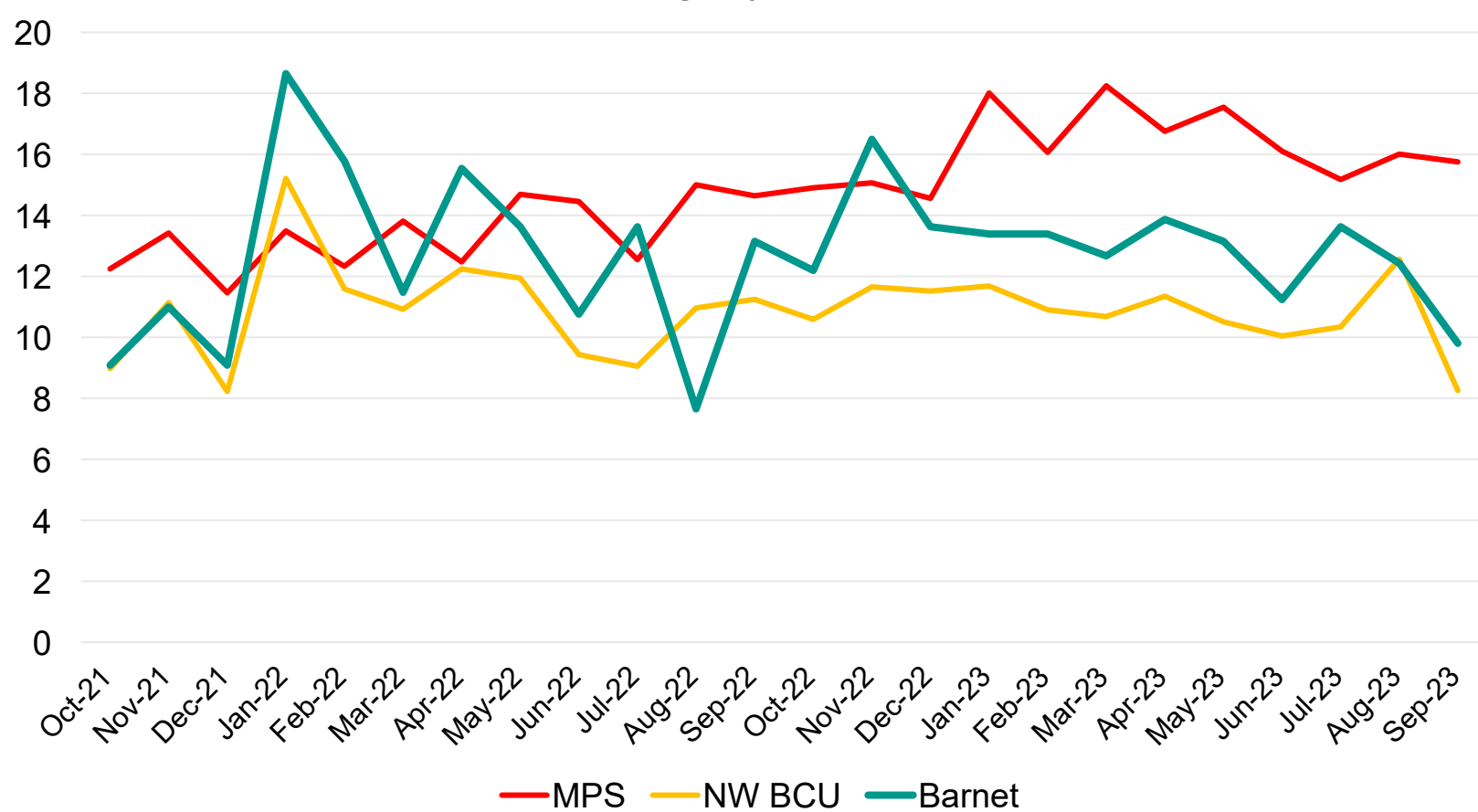
Burglary Business and Community



In the 4 months of June 2023 to September 2023 there were 197 cases of Non-Residential Burglary in Barnet

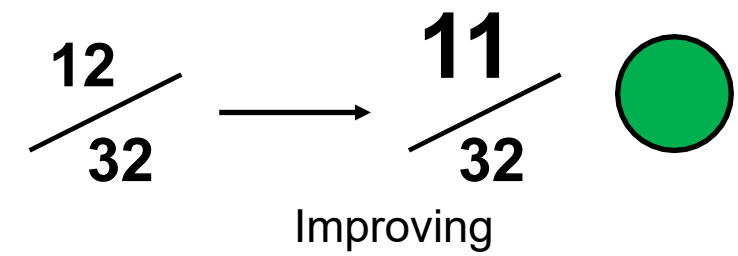
Trend

Non-Residential Burglary per 100,000 Population

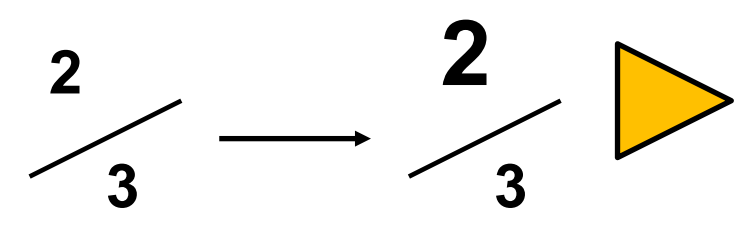


4 Month Performance

MPS Comparison (4 Month Period) change from same period last year.



NW BCU Comparison (4 Month Period) change from same period last year.



There were 197 cases of Non-Residential Burglary in the 4 months of June 2023 to September 2023. In the same period 12 months prior there were 189. This is an increase of 4.2%

There were 652 cases of Non-Residential Burglary in Barnet in the 12 months up to September 2023. In the 12 months prior there were 625. This is an increase of 4.3%

Caring for people, our places and the planet

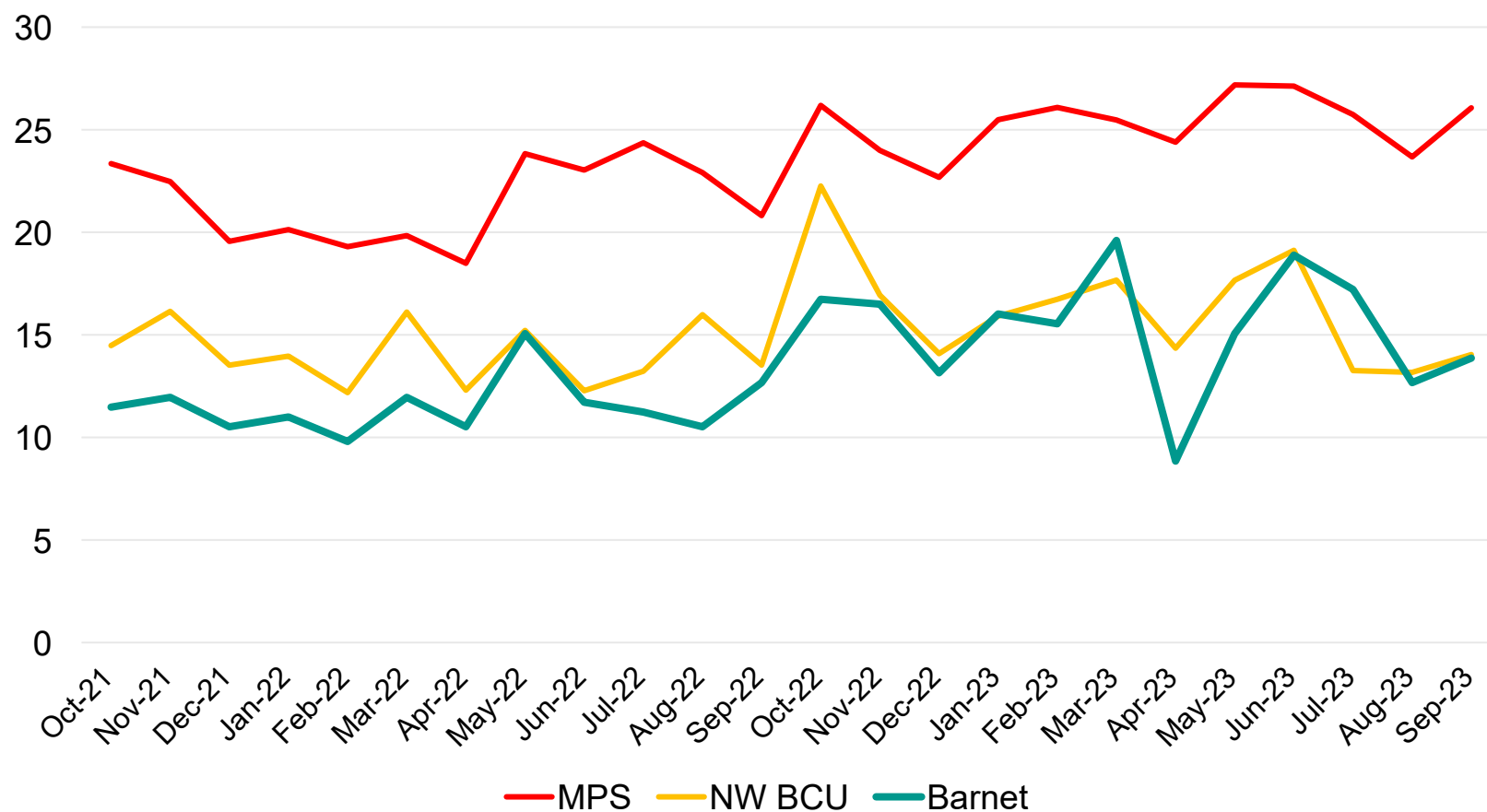
Robbery of Personal Property



In the 4 months of June 2023 to September 2023 there were 262 cases of Robbery of Personal Property in Barnet

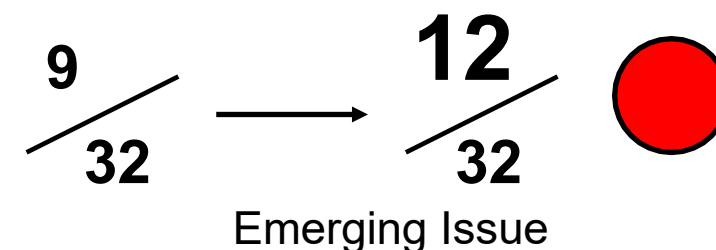
Trend

Robbery of Personal Property per 100,000 Population

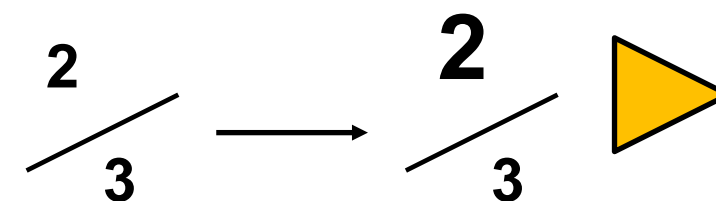


4 Month Performance

MPS Comparison (4 Month Period) change from same period last year.



NW BCU Comparison (4 Month Period) change from same period last year.



There were 262 cases of Robbery of Personal Property in the 4 months of June 2023 to September 2023. In the same period 12 months prior there were 193. This is an increase of 35.8%

There were 770 cases of Robbery of Personal Property in Barnet in the 12 months up to September 2023. In the 12 months prior there were 579. This is an increase of 33%

Caring for people, our places and the planet

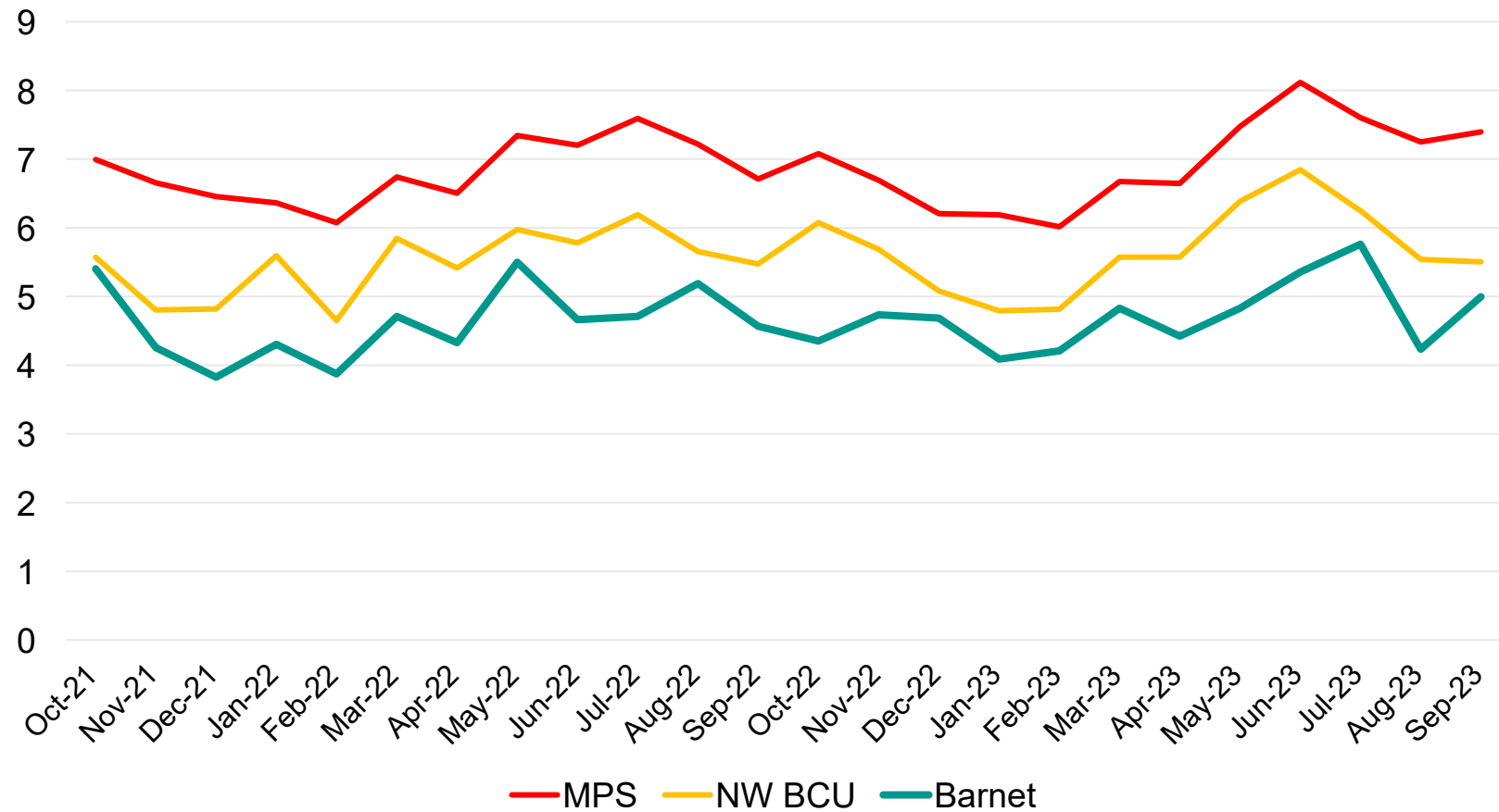
Violence with Injury



In the 4 months of June 2023 to September 2023 there were 851 cases of Violence with Injury in Barnet

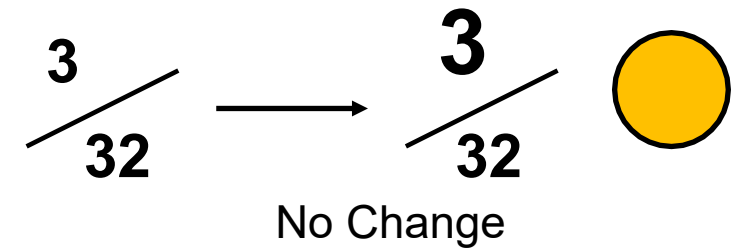
Trend

Violence with Injury per 10,000 Population

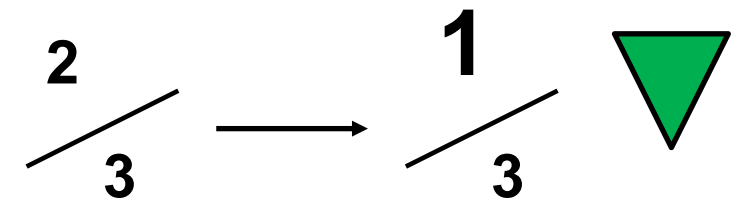


4 Month Performance

MPS Comparison (4 Month Period) change from same period last year.



NW BCU Comparison (4 Month Period) change from same period last year.



There were 851 cases of Violence with Injury in the 4 months of June 2023 to September 2023. In the same period 12 months prior there were 800. This is an increase of 6.4%

There were 2363 cases of Violence with Injury in Barnet in the 12 months up to September 2023. In the 12 months prior there were 2314. This is an increase of 2.1%

Caring for people, our places and the planet

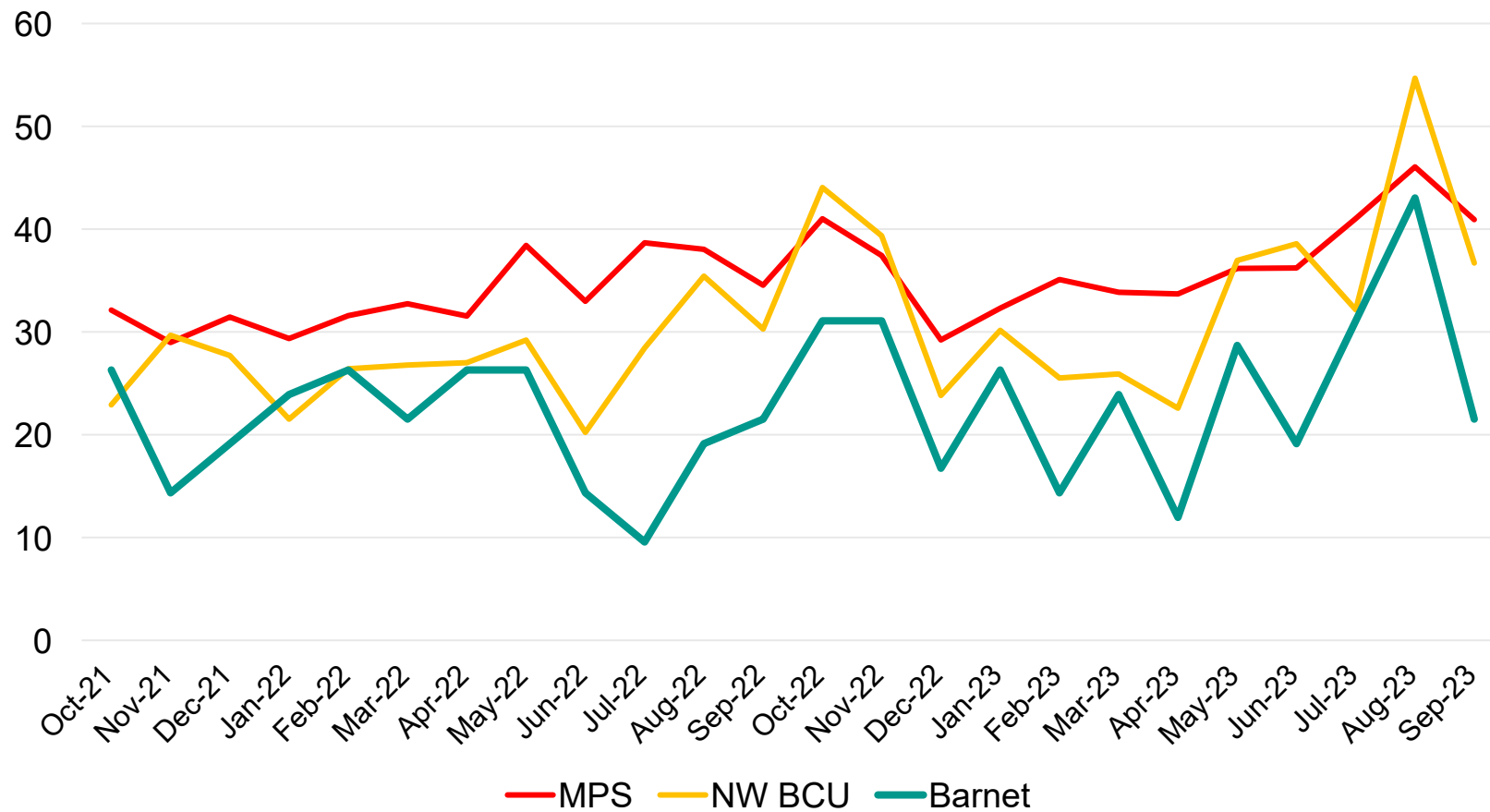
Knife Crime With Injury



In the 4 months of June 2023 to September 2023 there were 41 cases of Knife Crime With Injury in Barnet

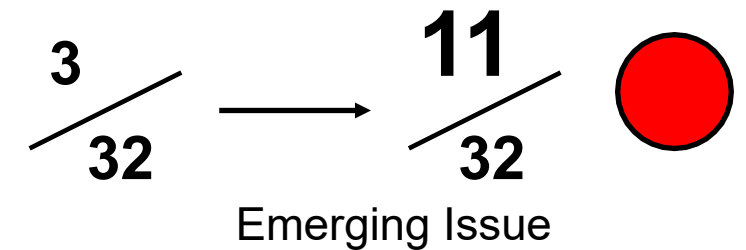
Trend

Knife Crime With Injury per 1,000,000 Population

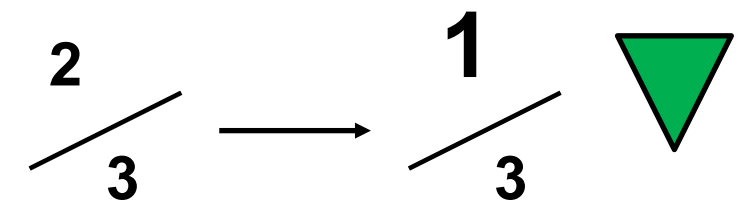


4 Month Performance

MPS Comparison (4 Month Period) change from same period last year.



NW BCU Comparison (4 Month Period) change from same period last year.



There were 41 cases of Knife Crime With Injury in the 4 months of June 2023 to September 2023. In the same period 12 months prior there were 25. This is an increase of 64%

There were 108 cases of Knife Crime With Injury in Barnet in the 12 months up to September 2023. In the 12 months prior there were 83. This is an increase of 30.1%

Caring for people, our places and the planet

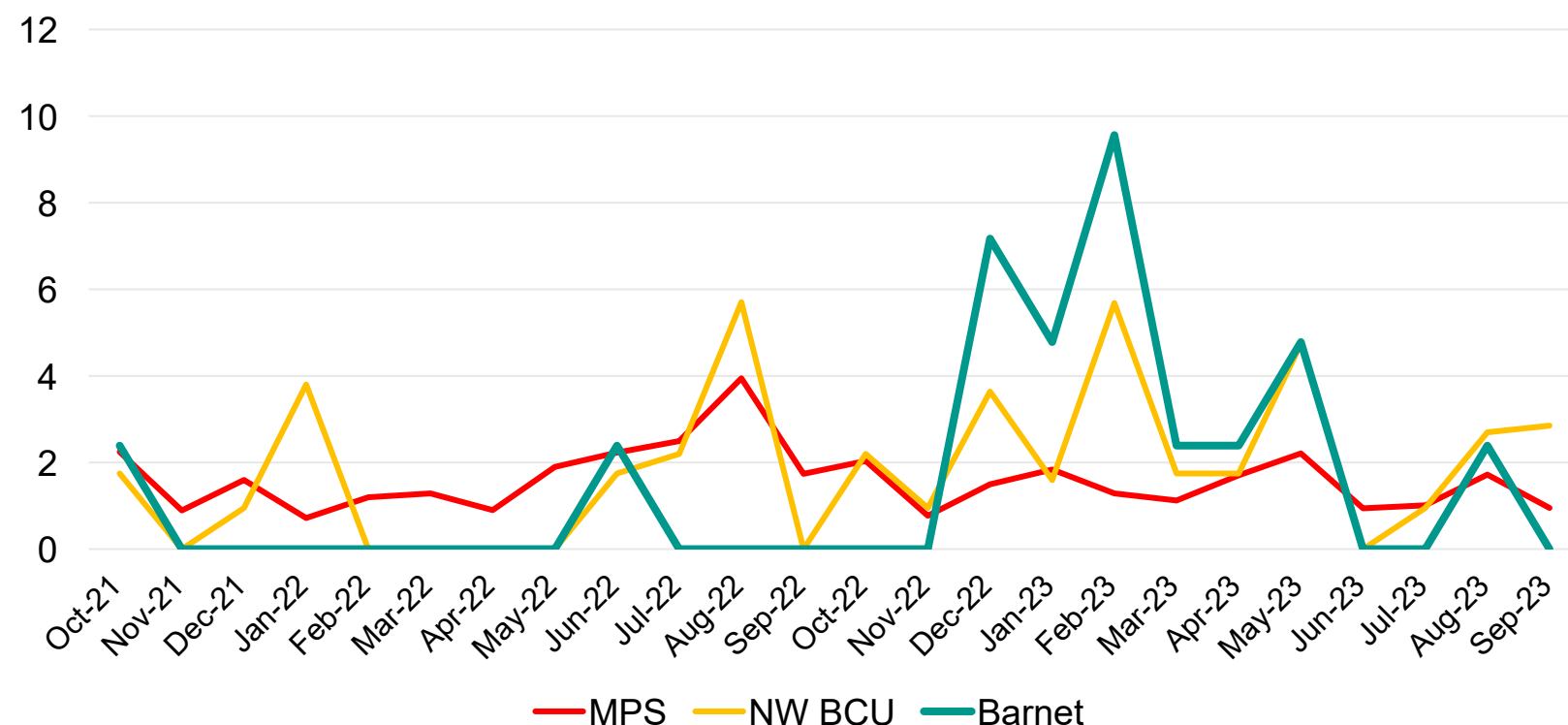
Gun Crime Lethal Barrelled Discharged



In the 4 months of June 2023 to September 2023 there were 1 cases of Gun Crime Lethal Barrelled Discharged in Barnet

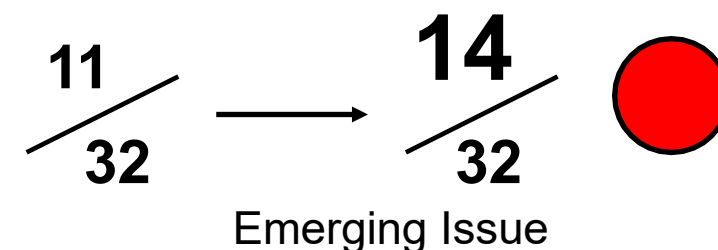
Trend

Gun Crime Lethal Barrelled Discharged per 1,000,000 Population

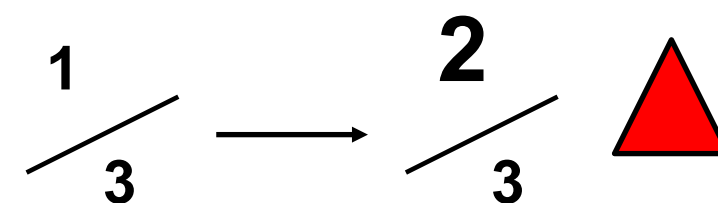


4 Month Performance

MPS Comparison (4 Month Period) change from same period last year.



NW BCU Comparison (4 Month Period) change from same period last year.



There were 1 cases of Gun Crime Lethal Barreled Discharged in the 4 months of June 2023 to September 2023. In the same period 12 months prior there were 1. This is a decrease of 0%

There were 14 cases of Gun Crime Lethal Barrelled Discharged in Barnet in the 12 months up to September 2023. In the 12 months prior there were 2. This is an increase of 600%

Caring for people, our places and the planet

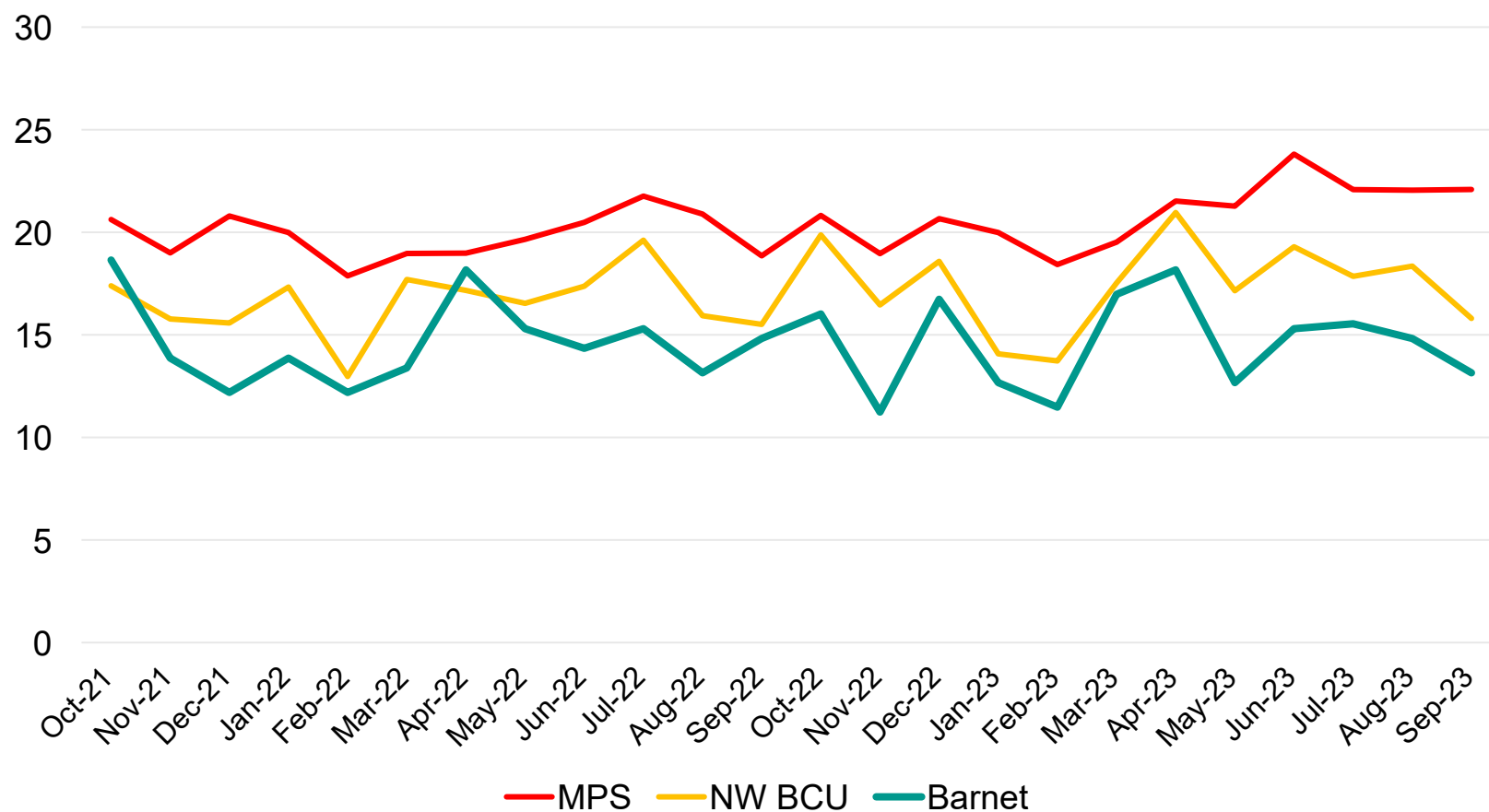
Domestic Abuse VWI



In the 4 months of June 2023 to September 2023 there were 246 cases of Domestic Abuse VWI in Barnet

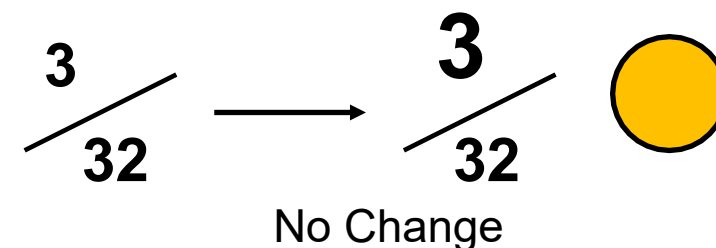
Trend

Domestic Abuse VWI per 100,000 Population

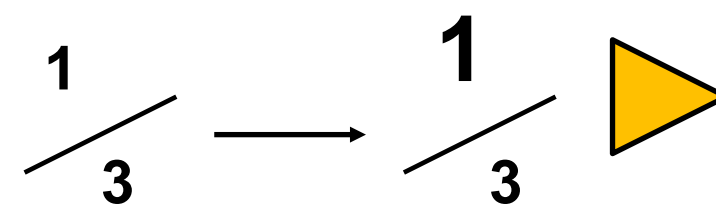


4 Month Performance

MPS Comparison (4 Month Period) change from same period last year.



NW BCU Comparison (4 Month Period) change from same period last year.



There were 246 cases of Domestic Abuse VWI in the 4 months of June 2023 to September 2023. In the same period 12 months prior there were 241. This is an increase of 2.1%

There were 731 cases of Domestic Abuse VWI in Barnet in the 12 months up to September 2023. In the 12 months prior there were 733. This is a decrease of 0.3%

Caring for people, our places and the planet

Anti-Social Behaviour – Cases

Data is the 4 months of June 2023 – September 2023 (incl.)

ASB Tools and Powers Outcomes:

Month	Injunction	CBO	CPN Written Warning	CPN	CPN Breached	PSPO	PCO
June 2023	0	0	20	1	0	20	1
July 2023	0	0	9	1	0	20	0
August 2023	0	0	13	0	0	29	0
September 2023	0	0	6	2	0	14	0

Key

CBO - Criminal Behaviour Order – available on conviction of a criminal offence, used for the most serious and persistent offenders.

CPN Written Warning - Community Protection Notice Written Warning – precursor to CPN

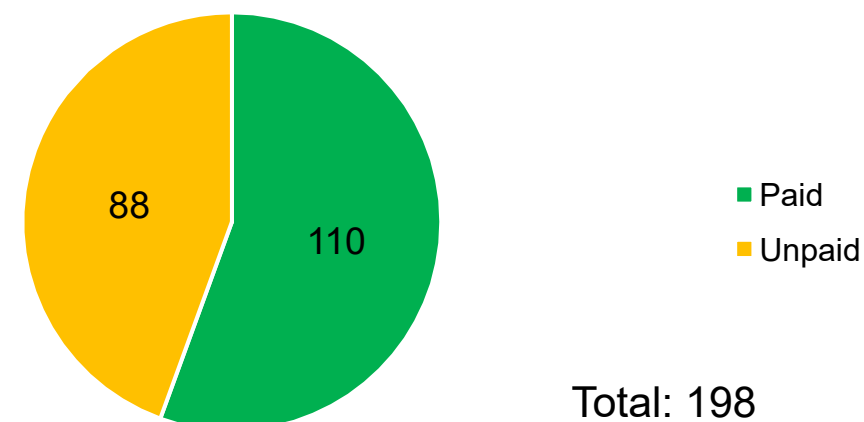
CPN - Community Protection Notice – used to stop a person/bus./org. committing ASB which spoils the community's quality of life

PCO - Premises Closure Order – used to protect victims and communities by closing premises that are causing nuisance or disorder

PSPO – Public Space Protection Order - enforced from December 2022

Fixed Penalty Notices: 4 Months to September 2023

FPN: 4 Months to September 2023



Community Trigger*: 4 Months to September 2023

There were **4** Community Trigger applications received during the 4 months to September 2023.

*Community Triggers give victims and communities the right to request a review of their case (where the local threshold is met), to bring agencies together to take a joined up, problem solving approach for the victim.

Caring for **people**, our **places** and the **planet**

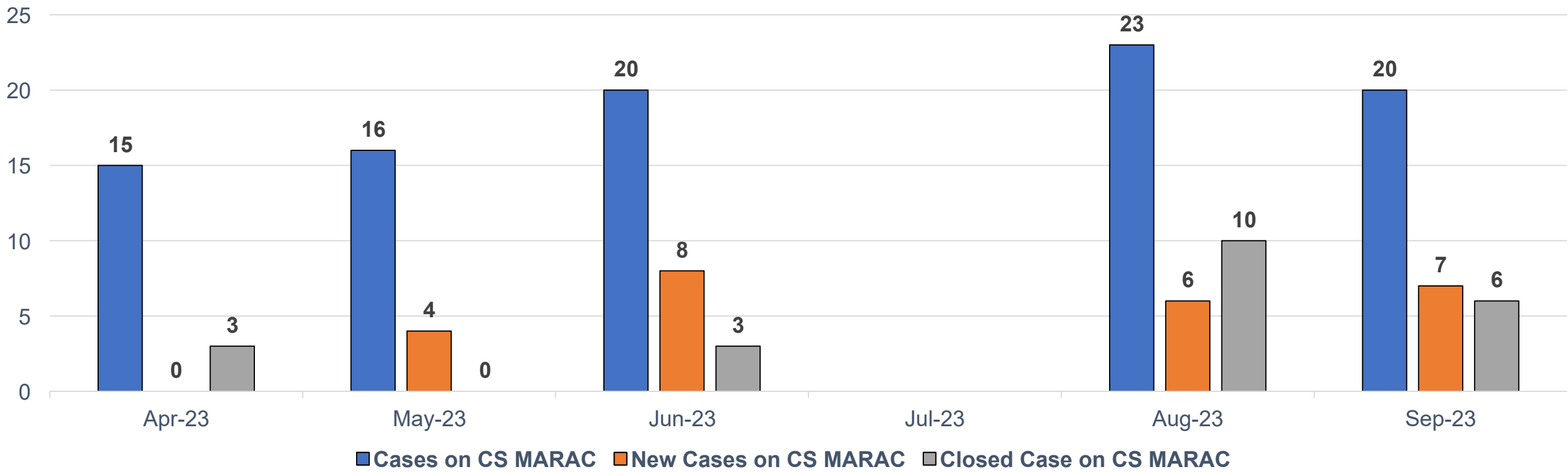
Anti-Social Behaviour - Community Safety MARAC (Multi-Agency Risk Assessment Conference) Cases



Data is from April 2023 - September 2023 incl.

Community Safety MARAC Cases (April 2023 – September 2023)

CS MARAC April – September 2023



Between April 2023 - September 2023:

- Total CS MARAC cases average approx. 19 per month (ongoing cases, subject to actions from CS MARAC panel/partners)
- New CS MARAC cases average approx. 5 per month
- Closed CS MARAC cases average approx. 4 per month
- The CS MARAC is held every 6 weeks therefore there was no CS MARAC in July 2023

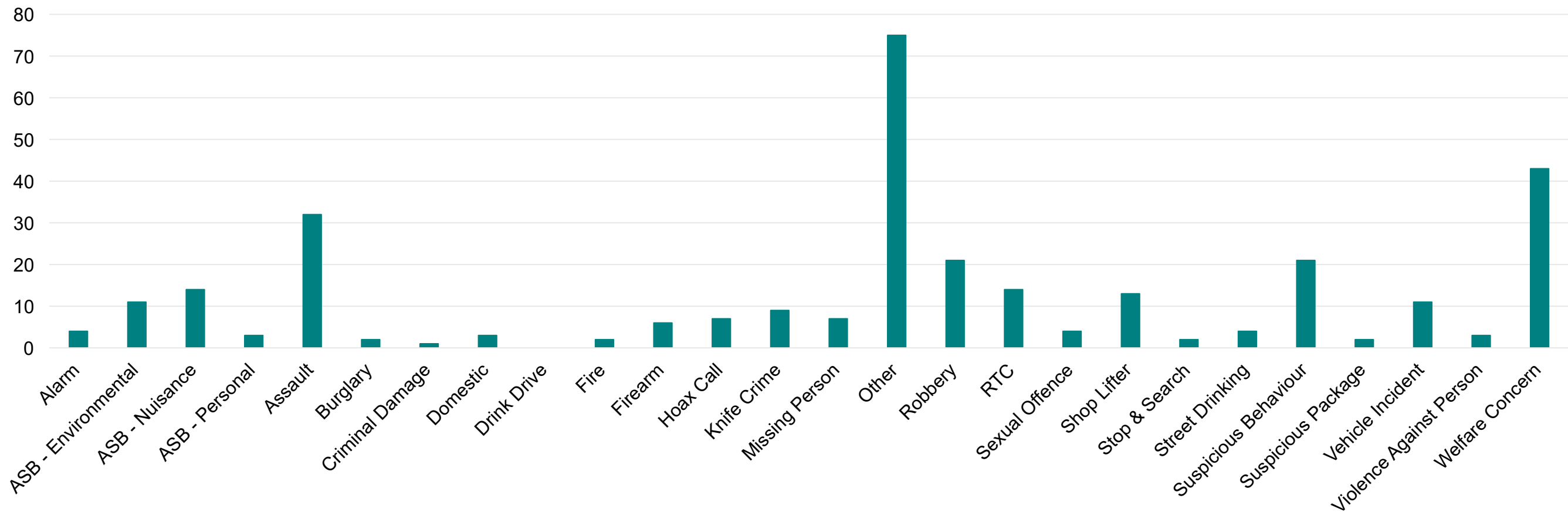
Caring for people, our places and the planet

CCTV Recorded Incidents

For the 4 months of from June 2023 - September 2023 (inc.) there were 314 incidents recorded by CCTV in Barnet

CCTV by Incident Type: 4 months of June 2023 to September 2023

Number of CCTV by Incident Type



* Other refers to incidents of mental health, distress calls, alcohol, and incidents on public transport.

In the 3 months to September 2023:

- 10% of CCTV incidents involved Assault
- 24% of CCTV incidents involved Other
- 14% of CCTV incidents involved Welfare Concern
- 4% of CCTV incidents involved Shoplifting
- 9% of CCTV incidents involved Anti-social Behaviour
- 7% of CCTV incidents involved Robbery

Caring for people, our places and the planet

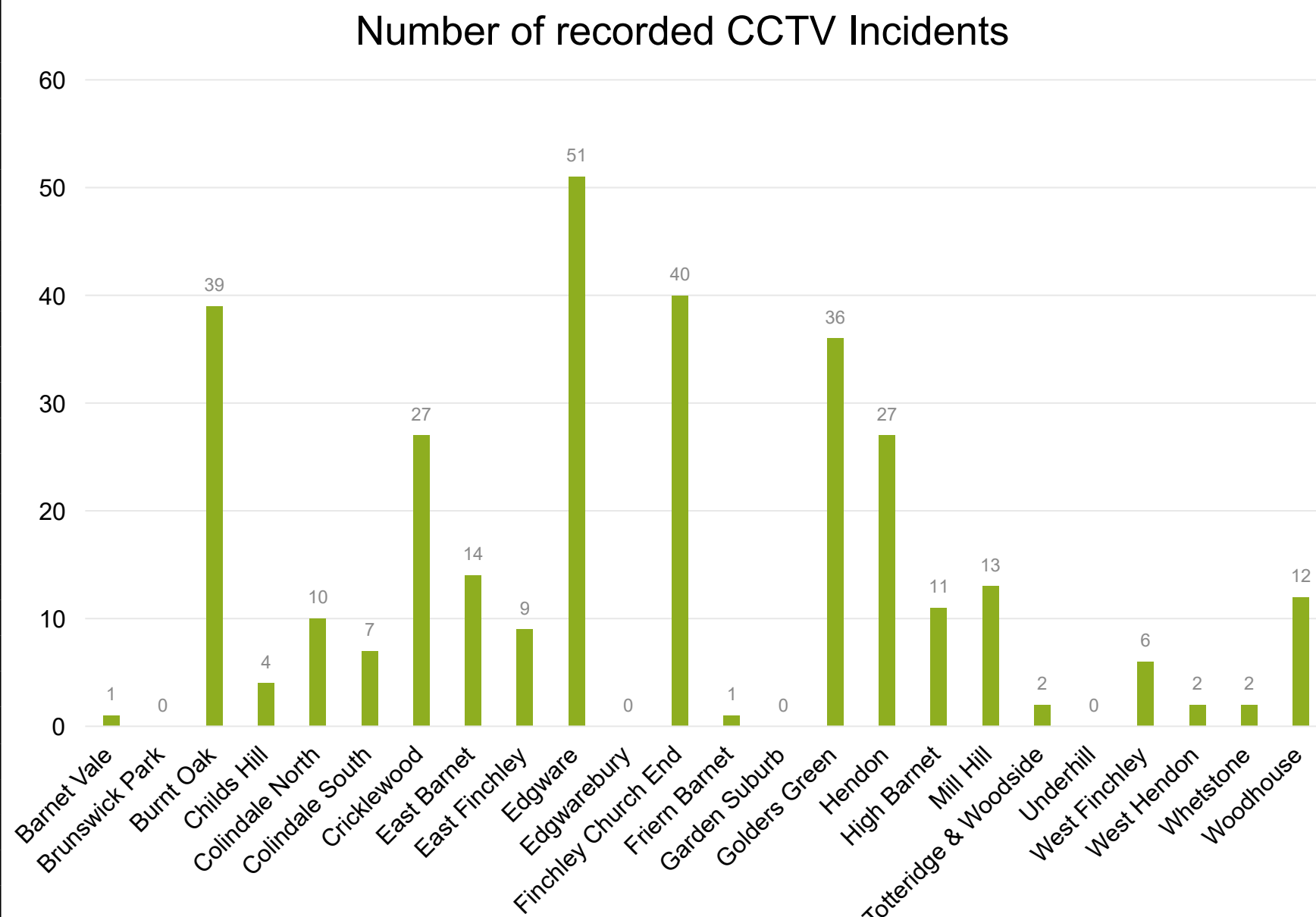
CCTV Recorded Incidents: By Ward



For the 4 months of June 2023 to September 2023 (incl.) there were 314 incidents recorded by CCTV in Barnet

CCTV Incidents by Ward: 4 months of June 2023 to Sep 2023

Ward	Number of Incidents	% of incidents
Barnet Vale	1	0%
Brunswick Park	0	0%
Burnt Oak	39	12%
Childs Hill	4	1%
Colindale North	10	3%
Colindale South	7	2%
Cricklewood	27	9%
East Barnet	14	4%
East Finchley	9	3%
Edgware	51	16%
Edgwarebury	0	0%
Finchley Church End	40	13%
Friern Barnet	1	0%
Garden Suburb	0	0%
Golders Green	36	11%
Hendon	27	9%
High Barnet	11	4%
Mill Hill	13	4%
Totteridge & Woodside	2	1%
Underhill	0	0%
West Finchley	6	2%
West Hendon	2	1%
Whetstone	2	1%
Woodhouse	12	4%
Grand Total	314	100%



The largest percentage of CCTV incidents were captured in Edgware (16%), followed by Finchley Church End (13%) and Burnt Oak (12%).

Caring for people, our places and the planet

CCTV Recorded Incidents by Ward

For the 4 months to September 2023 there were 314 incidents recorded by CCTV in Barnet



Number of CCTV Incidents by Ward: 4 months to September 2023

	Alarm	ASB - Environmental	ASB - Nuisance	ASB - Personal	Assault	Burglary	Criminal Damage	Domestic	Drink Drive	Fire	Firearm	Hoax Call	Knife Crime	Missing Person	Other	Robbery	RTC	Sexual Offence	Shop Lifter	Stop & Search	Street Drinking	Suspicious Behaviour	Suspicious Package	Vehicle Incident	Violence Against Person	Welfare Concern	TOTAL
LBB Wards																											
Barnet Vale	0	0	0	0	0	0	0	0	0	0	0	0	0	0	0	0	0	0	0	0	0	0	0	0	0	1	1
Burnt Oak	0	4	4	1	3	0	0	1	0	0	1	1	0	0	6	1	3	0	2	0	0	1	0	4	0	7	39
Childs Hill	0	0	0	0	0	0	0	0	0	0	1	0	0	0	1	0	0	0	0	0	0	0	0	2	0	0	4
Colindale North	0	0	2	0	4	0	0	0	0	0	0	0	1	0	0	0	0	0	1	0	0	0	0	0	0	2	10
Colindale South	0	0	0	0	0	0	0	0	0	0	0	0	0	0	7	0	0	0	0	0	0	0	0	0	0	0	7
Cricklewood	0	4	0	0	1	1	0	0	0	0	0	0	2	1	5	0	0	0	1	0	2	4	0	1	0	5	27
East Barnet	0	0	2	1	1	0	0	0	0	0	0	0	1	0	2	4	1	0	2	0	0	0	0	0	0	0	14
East Finchley	0	0	0	0	1	0	0	0	0	0	0	2	0	0	3	1	0	0	1	0	0	0	0	0	0	1	9
Edgware	1	0	2	0	7	0	1	0	0	1	0	1	1	3	7	8	1	2	1	0	0	7	1	2	0	5	51
Finchley Church End	0	1	2	0	4	1	0	2	0	0	2	1	1	0	19	1	2	1	1	0	0	2	0	0	0	0	40
Friern Barnet	0	0	0	0	0	0	0	0	0	0	0	0	0	0	1	0	0	0	0	0	0	0	0	0	0	0	1
Garden Suburb	0	0	0	0	0	0	0	0	0	0	0	0	0	0	0	0	0	0	0	0	0	0	0	0	0	0	0
Golders Green	1	0	0	0	4	0	0	0	0	0	0	0	1	0	11	2	0	0	1	0	2	2	1	2	0	9	36
Hendon	0	2	0	0	4	0	0	0	0	0	1	0	1	0	7	2	0	0	2	0	0	2	0	0	3	3	27
High Barnet	0	0	0	0	0	0	0	0	0	1	0	0	0	1	3	2	2	0	0	2	0	0	0	0	0	0	11
Mill Hill	2	0	0	0	0	0	0	0	0	0	0	1	1	2	3	0	2	1	0	0	0	1	0	0	0	0	13
Totteridge & Woodside	0	0	0	0	0	0	0	0	0	0	0	0	0	0	0	0	2	0	0	0	0	0	0	0	0	0	2
West Finchley	0	0	0	1	0	0	0	0	0	0	0	0	0	0	0	0	0	0	0	0	0	2	0	0	0	3	6
West Hendon	0	0	0	0	1	0	0	0	0	0	0	0	0	0	0	0	0	0	1	0	0	0	0	0	0	0	2
Whetstone	0	0	0	0	0	0	0	0	0	0	0	1	0	0	0	0	1	0	0	0	0	0	0	0	0	0	2
Woodhouse	0	0	2	0	2	0	0	0	0	0	1	0	0	0	0	0	0	0	0	0	0	0	0	0	0	7	12
TOTAL	4	11	14	3	32	2	1	3	0	2	6	7	9	7	75	21	14	4	13	2	4	21	2	11	3	43	314

In Edgware, the largest number of CCTV incidents captured was for Robbery.
 In Finchley Church End, it was for Other.
 In Burnt Oak, the largest number of CCTV incidents captured was for Welfare Concern and Anti-social Behaviour (Combined).

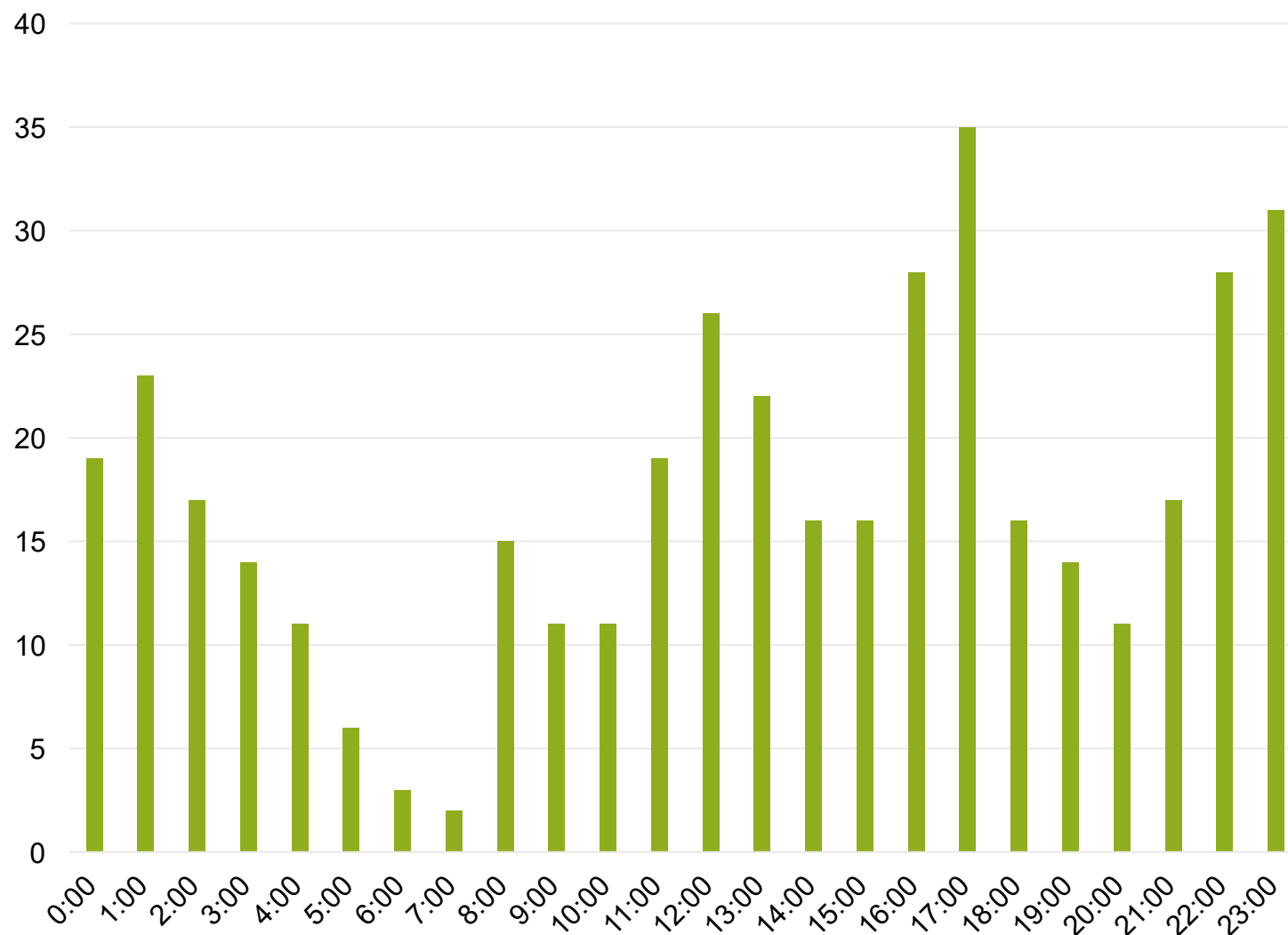
Caring for people, our places and the planet

CCTV Recorded Incidents cont.

In the 4 months of June 2023 to September 2023 (incl.) there were 314 incidents recorded by CCTV in Barnet

Time of Incidents: 4 months to September 2023

LBB CCTV Records by Time: 4 months to September 2023

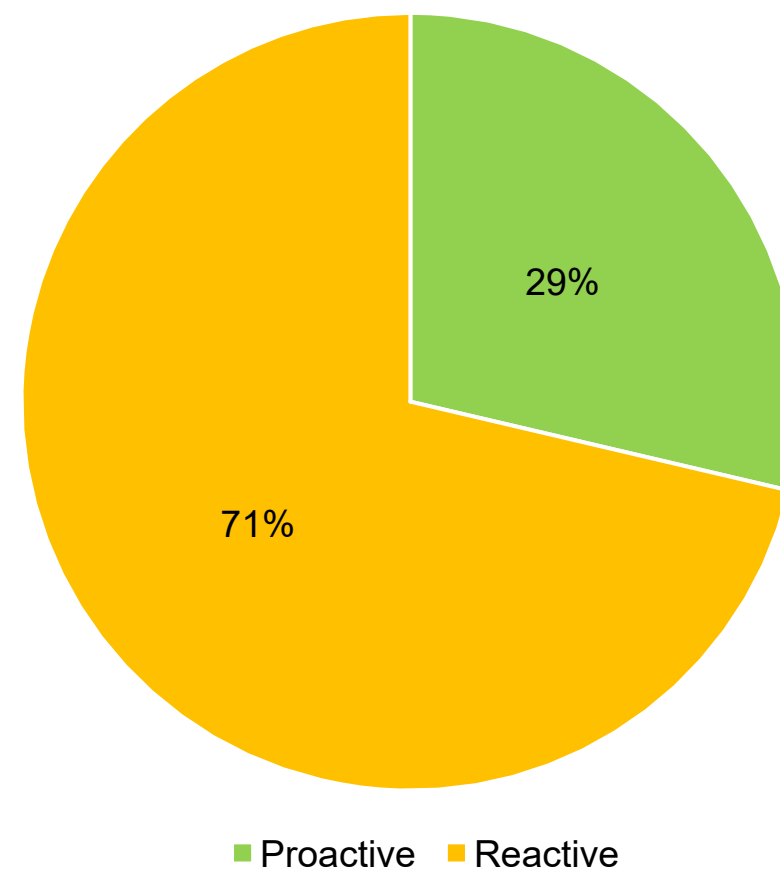


- The above chart shows the quietest periods are between 04:00am and 07:00am.

Caring for people, our places and the planet

Proactive or Reactive Incidents: 4 months to September 2023

Proportion of Proactive vs Reactive Incidents Recorded on CCTV

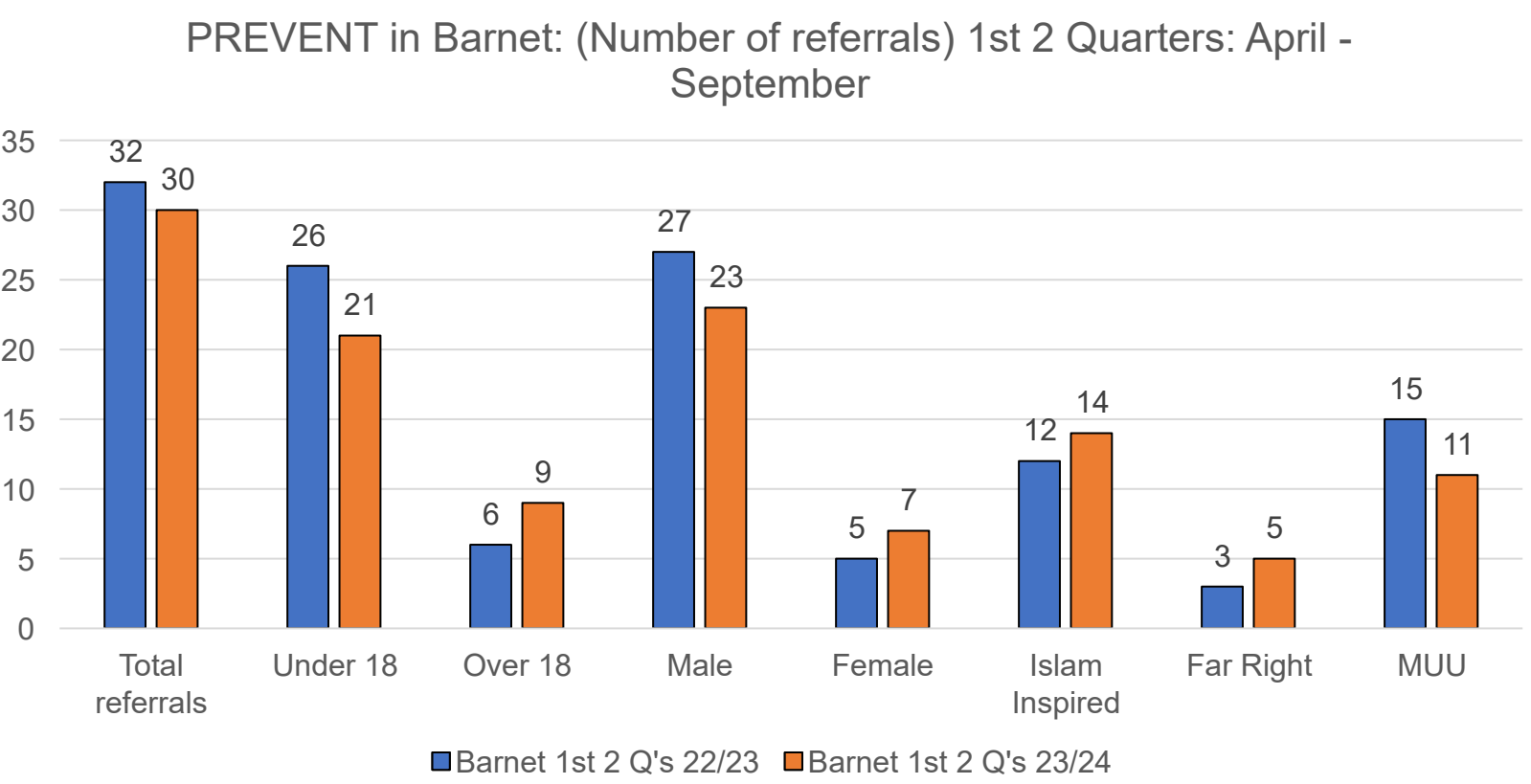


- The above pie chart shows the majority of CCTV incidents captured are reactive. (The police or the council have asked the control room for assistance.)

PREVENT: Number of Referrals Barnet Qtrly Comparison

1st 2 Quarters (April-September) 2022/23 and 2023/24

Trend



There were 32 PREVENT referrals in Barnet over Qtr1 & Qtr2. In the previous year, there were 30.
This is a decrease of -6%

In Barnet over the two comparable quarters of 2022/23 and 2023/24, the data shows the majority of referrals involve:

- Male (77%)
- Under 18 (70%)
- MUU inspired (37%)

Caring for people, our places and the planet

Quarter 1 & 2 2022/23 compared to 2023/24 (April-September)

Prevent In Barnet	Q1 & Q2 2022/23	Q1 & Q2 2023/24	% change
Total referrals	32	30	-6.0%
Under 18	26	21	-19.0%
Over 18	6	9	50.0%
Male	27	23	-14.8%
Female	5	7	40.0%
Islam Inspired	12	14	16.6%
Far Right	3	5	66.6%
MUU	15	11	-26.6%

In quarter 1 compared to same period the previous year:

- Total referrals decreased by 6.0%
- There was a 14.8% decline in male referrals (down from 27 in 2022/23 to 23 in 2023/24)
- Referrals of under 18's have decreased by 19.0%
- Islam Inspired referrals increased by 16.6%
- Mixed, Unstable and Unclear (MUU) referrals decreased by 26.6%

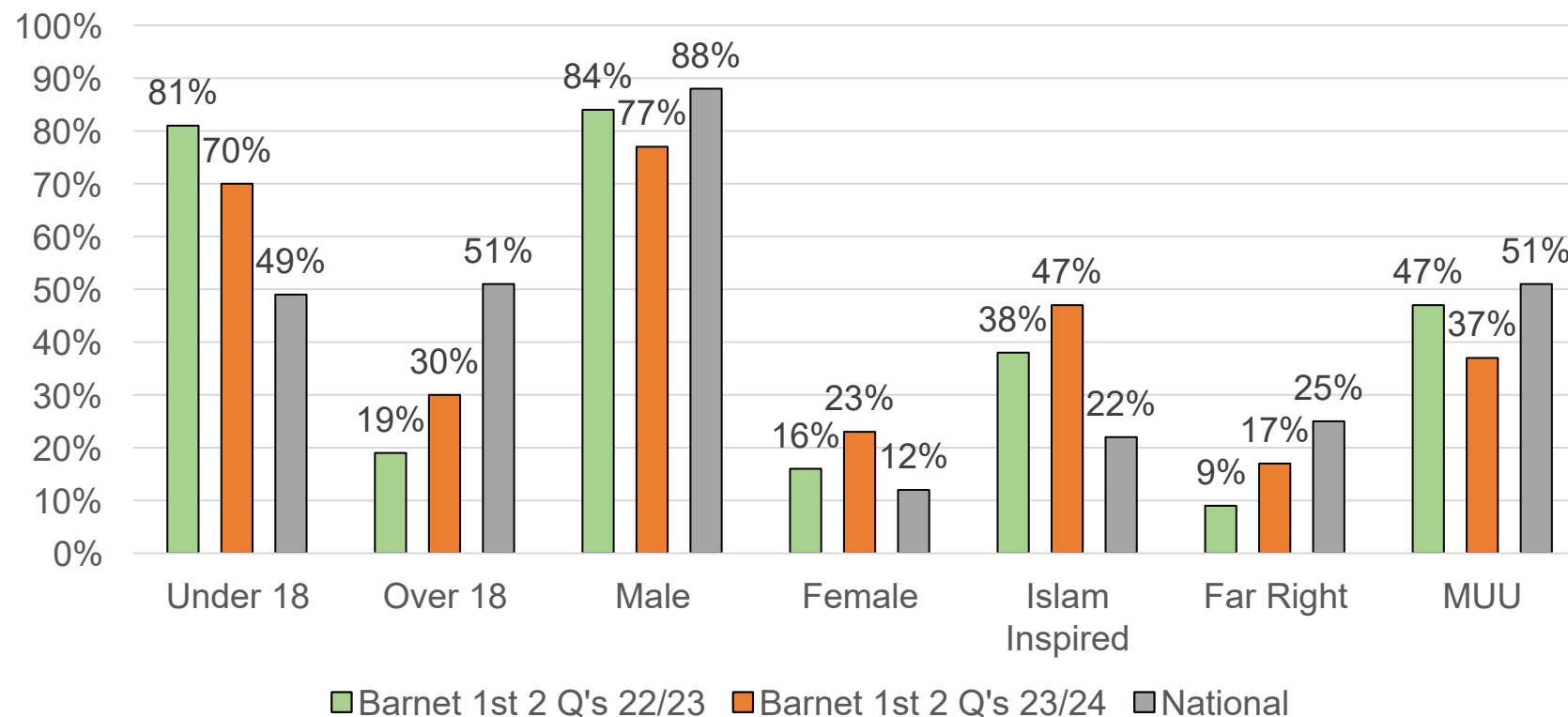
PREVENT: Percentage of Referrals - National Comparison



1st 2 Quarters (April – September) 2022/23 and 2023/24

Trend

PREVENT in Barnet: (Percentage of referrals) 1st 2 Quarters 2022/23 and 2023/24



Barnet vs National

Total Referrals Percentage Point Difference: Barnet Quarter 1 & 2 2023/24 vs National.

Percentage point difference	1 st 2 Qtrs 2023/24 vs National
Under 18	21%
Over 18	-21%
Male	-11%
Female	11%
Islam Inspired	25%
Far Right	-13%
MUU	-14%

During quarter 1 in Barnet, compared to the National 2021/22 average there was:

- +21% point difference in under 18 referrals
- +11% difference in Female referrals
- +25% point difference in Islam inspired referrals
- -14% point difference in Mixed, Unstable and Unclear referrals (MUU)

Caring for people, our places and the planet